

MILL CREEK FARM GAZETTE

VOLUME III ISSUE I

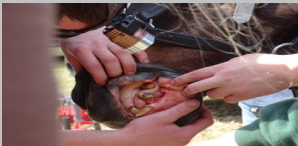
JANUARY 2016

January has been a very busy month here at Mill Creek Farm. All the horses were wormed, farriers were out to work on all the retiree's hooves. An equine dental team from The American School of Dentistry came and examined and treated 50 family members. They'll be back in February to see the remainder of the residents.

*— Mary and Paul Gregory, Shane, The Volunteers and all the Horses
Retirement Home for Horses, Inc. at Mill Creek Farm*

Welcome Dr. Hyde and The American School of Dentistry to Mill Creek Farm

Dr. Raymond Hyde is the President of The American School of Dentistry located in Purcellville, VA . He operates a general mobile equine practice and travels the world to teach the importance of dental care for horses. His classes are from 6 to 12 students in size so that instructors can provide hands on experience and share their knowledge to ensure that each individual student can learn the techniques needed to provide future horses with proper equine dental care. Dr. Hyde lectures internationally at equine dental conferences. *We are so fortunate that his school has chosen Mill Creek Farm as one of their travel teaching destinations.* Students get to learn about equine care and the importance of dental health for elderly horses.



Zippy

A former polo horse and one of our newest arrivals gets major surgery after it was discovered he was most likely hit in the face with a polo mallet causing two of his teeth to protrude through the gums. Zippy has made a full recovery and is living pain-free for the first time in almost a decade.



Little Bit gets a Checkup



Dr. Hyde



Coordinators Elaine and Jenny helped gather the horses.



Dr. Raymond Hyde and his wife Hanina

New Arrival



28 Year Old Bay Morgan, arrived January 8, 2016

Polo

Retired from the State of Connecticut's First Company Governor's Horse Guard. He was a working member of the unit for 20 years.

Welcome Home, Polo!

The Horse Shelters Get a Fresh Coat of Paint



Shamrock keeps a close eye on the work being performed



Volunteer coordinator Steven Ledford, pictured on ladder, kept everything running smoothly



Members of The English Language Institute



Catherine Kradel, second from left, brought The English Language Institute to help the horses.

We are so fortunate that groups from the University of Florida and Santa Fe College come out to help the horses. We are always working on projects and in need of groups to help us get them done. This quarter we are working on getting all the horses' shelters painted to help keep them in top shape for the horses.

If you are a group and would like to help with painting the shelters or get involved in other future projects please send us an [email](mailto:rh@millcreekfarm.org) to find out more.

Retirement Home for Horses, Inc./PO Box 2100/Alachua, FL 32616

MillCreekFarm.org/rhh@millcreekfarm.org/386-462-1001